

MAiRiX 



SPATIUM
M570

PCIe 5.0 NVMe M.2 HS



- **Sequential Read up to (MB/s) :**
10,000
- **Sequential Write up to (MB/s) :**
10,000
- **Random Read 4KB up to (IOPS) :**
1,400,000

SPATIUM

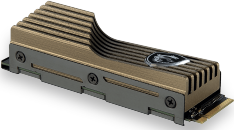
M480 PCIe 4.0 NVMe M.2

PRO M.2

- Suitable for both desktop and notebook



PRO M.2 HS



M.2 PLAY

- PS5 Support



Capacity	500GB	1TB	2TB	4TB
Flash Memory	3D NAND			
DRAM Cache	512MB DDR4	1GB DDR4	2GB DDR4	
Form Factor	M.2 2280			
Interface	PCIe Gen4x4, NVMe 1.4			
Compatibility	PCIe Gen4 / Gen3 / Gen2 / Gen1			
Sequential Read up to (MB/s)	6500	7400	7400	7400
Sequential Write up to (MB/s)	2850	6000	7000	7000
Random Read 4KB up to (IOPS)	170,000	350,000	650,000	650,000
Random Write 4KB up to (IOPS)	600,000	700,000	700,000	700,000
Terabytes Written (TBW)	350	700	1400	3000
Mean Time Between Failure (MTBF)	Up to 1,600,000 Hours			
Advanced Features	TRIM (Performance Optimization, OS support required) SMART (Self-Monitoring, Analysis and Reporting Technology) LDPC (Low Density Parity Check) ECC Algorithm End to End Data Path Protection APST (Autonomous Power State Transition) AES101/Pyrite (Encryption, Data Security)			

SPATIUM

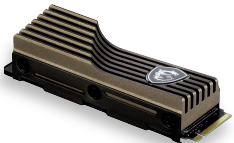
M460 PCIe 4.0 NVMe M.2

M.2

- Suitable for both desktop and notebook



M.2 HS



Capacity	250GB	500GB	1TB	2TB
Flash Memory	3D NAND			
Form Factor	M.2 2280			
Interface	PCIe Gen4x4, NVMe 1.4			
Compatibility	PCIe Gen4 / Gen3 / Gen2 / Gen1			
Sequential Read up to (MB/s)	4650	5000	5000	4900
Sequential Write up to (MB/s)	1900	3750	4500	4400
Random Read 4KB up to (IOPS)	220,000	440,000	550,000	525,000
Random Write 4KB up to (IOPS)	470,000	920,000	950,000	950,000
Terabytes Written (TBW)	200	300	600	1200
Mean Time Between Failure (MTBF)	Up to 1,500,000 Hours			
Advanced Features	TRIM (Performance Optimization, OS Support required) SMART (Self-Monitoring, Analysis and Reporting Technology) LDPC (Low Density Parity Check) ECC Algorithm End to End Data Path Protection APST (Autonomous Power State Transition) Prtite (Encryption, Data Security)			

SPATIUM

M470 PCIe 4.0 NVMe M.2

- Suitable for both desktop and notebook



Capacity	1TB	2TB
Flash Memory	3D NAND	
DRAM Cache	1GB DDR4	2GB DDR4
Form Factor	M.2 2280	
Interface	PCIe Gen4x4, NVMe 1.3	
Compatibility	PCIe Gen4 / Gen3 / Gen2 / Gen1	
Sequential Read up to (MB/s)	5000	5000
Sequential Write up to (MB/s)	4400	4400
Random Read 4KB up to (IOPS)	600,000	600,000
Random Write 4KB up to (IOPS)	600,000	600,000
Terabytes Written (TBW)	1600	3300
Mean Time Between Failure (MTBF)	Up to 1,700,000 Hours	
Advanced Features	TRIM (Performance Optimization, OS support required) SMART (Self-Monitoring, Analysis and Reporting Technology) LDPC (Low Density Parity Check) ECC Algorithm End to End Data Path Protection APST (Autonomous Power State Transition) Pyrite (Encryption, Data Security)	

SPATIUM

M450 PCIe 4.0 NVMe M.2

- Suitable for both desktop and notebook



Capacity	250GB	500GB	1TB
Flash Memory	3D NAND		
Form Factor	M.2 2280		
Interface	PCIe Gen4x4, NVMe 1.4		
Compatibility	PCIe Gen4 / Gen3 / Gen2 / Gen1		
Sequential Read up to (MB/s)	3500	3600	3600
Sequential Write up to (MB/s)	1200	2300	3000
Random Read 4KB up to (IOPS)	150,000	300,000	420,000
Random Write 4KB up to (IOPS)	300,000	550,000	550,000
Terabytes Written (TBW)	150	300	600
Mean Time Between Failure (MTBF)	Up to 1,500,000 Hours		
Advanced Features	TRIM (Performance Optimization, OS support required) SMART (Self-Monitoring, Analysis and Reporting Technology) LDPC (Low Density Parity Check) ECC Algorithm End to End Data Path Protection APST (Autonomous Power State Transition) Pyrite (Encryption, Data Security)		

SPATIUM

M390 NVMe M.2 M.2

- Suitable for both desktop and notebook



Capacity	250GB	500GB	1TB	2TB
Flash Memory	3D NAND			
Form Factor	M.2 2280			
Interface	PCIe Gen3x4, NVMe 1.4			
Compatibility	PCIe Gen3 / Gen2 / Gen1			
Sequential Read up to (MB/s)	3300			
Sequential Write up to (MB/s)	1200	2300	3000	3000
Random Read 4KB up to (IOPS)	150,000	300,000	420,000	420,000
Random Write 4KB up to (IOPS)	300,000	550,000	550,000	550,000
Terabytes Written (TBW)	150	200	400	1200
Mean Time Between Failure (MTBF)	Up to 1,500,000 Hours			
Advanced Features	TRIM (Performance Optimization, OS support required) SMART (Self-Monitoring, Analysis and Reporting Technology) LDPC (Low Density Parity Check) ECC Algorithm End to End Data Path Protection APST (Autonomous Power State Transition) Pyrite (Encryption, Data Security)			

SPATIUM

M371 NVMe M.2

- Suitable for both desktop and notebook



Capacity	500GB	1TB	2TB
Flash Memory	3D NAND		
Form Factor	M.2 2280		
Interface	PCIe Gen3x4, NVMe 1.3		
Compatibility	PCIe Gen3 / Gen2 / Gen1		
Sequential Read up to (MB/s)	2200	2350	2350
Sequential Write up to (MB/s)	1150	1700	1900
Random Read 4KB up to (IOPS)	60,000	90,000	135,000
Random Write 4KB up to (IOPS)	200,000	280,000	350,000
Terabytes Written (TBW)	110	210	480
Mean Time Between Failure (MTBF)	Up to 1,500,000 Hours		
Advanced Features	TRIM (Performance Optimization, OS Support required) SMART (Self-Monitoring, Analysis and Reporting Technology) LDPC (Low Density Parity Check) ECC Algorithm End to End Data Path Protection APST (Autonomous Power State Transition) Pyrite (Encryption, Data Security)		

SPATIUM

M370 NVMe M.2

- Suitable for both desktop and notebook



Capacity	128GB	256GB	512GB	1TB	2TB
Flash Memory	3D NAND				
Form Factor	M.2 2280-S2-M				
Interface	PCIe Gen3x4, NVMe 1.3				
Compatibility	PCIe Gen3 / Gen2 / Gen1				
Sequential Read up to (MB/s)	1800	2300	2400	2400	2400
Sequential Write up to (MB/s)	560	1100	1750	1750	1850
Random Read 4KB up to (IOPS)	102,000	150,000	210,000	215,000	220,000
Random Write 4KB up to (IOPS)	130,000	230,000	350,000	330,000	330,000
Terabytes Written (TBW)	75	200	400	800	1600
Mean Time Between Failure (MTBF)	Up to 1,500,000 Hours				
Advanced Features	TRIM (Performance Optimization, OS support OS support required) SMART (Self-Monitoring, Analysis and Reporting Technology) LDPC (Low Density Parity Check) ECC Algorithm End to End Data Path Protection APST (Autonomous Power State Transition) Pyrite (Encryption, Data Security)				

SPATIUM

S270 SATA 2.5

- Suitable for both desktop and notebook



Capacity	120GB	240GB	480GB
Flash Memory	3D NAND		
Form Factor	SATA 2.5"		
Interface	SATA III 6Gbps		
Compatibility	SATA III (6Gbps) / II (3Gbps) / I (1.5Gbps)		
Sequential Read up to (MB/s)	500		
Sequential Write up to (MB/s)	360	400	450
Random Read 4KB up to (IOPS)	38,000	50,000	55,000
Random Write 4KB up to (IOPS)	72,000	80,000	80,000
Terabytes Written (TBW)	40	110	250
Mean Time Between Failure (MTBF)	Up to 2,000,000 Hours		
Advanced Features	TRIM (Performance Optimization, OS support required) SMART (Self-Monitoring, Analysis and Reporting Technology) LDPC (Low Density Parity Check) ECC Algorithm Over-Provision		

Fullfill unlimited potential

Take care of your data



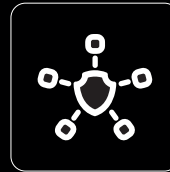
Supercharged
with Gen 5



PS5 Compatible
Heatsink



3D NAND Flash



Security & Reliability



Low Latency Gaming



MSI Center



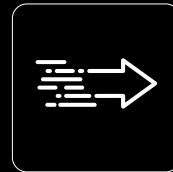
Nonstop Creativity
Booster



Optimal M.2 SSD



50 Month Matrix
Guarantee



Blazing Speeds



website



Instagram



Aparat

☎ 0 2 1 - 2 7 0 0

@matris

🌐 www.matris.co.ir